

**Quarterly Monitoring Report
Ground Water and Marine Water Analysis**

For

NAVI MUMBAI INTERNATIONAL AIRPORT (NMIA)



Sponsor:

City and Industrial Development Corporation of Maharashtra Ltd (CIDCO)

Period:

July - September 2018

PREPARED BY



**ADITYA ENVIRONMENTAL SERVICES PVT.LTD.
MOEFCC Recognized Laboratory under EP Act 1986
Accredited under ISO 9001: 2008 & OHSAS 18001: 2007 by ICQS
www.aespl.co.in**

INDEX

1. INTRODUCTION	1
2. SCOPE OF MONITORING WORK	2
2.1 Scope of Monitoring Work as per CIDCO Tender:	2
2.2 Locations of Monitoring:	2
2.3 Period/Time of Sampling (July – September 2018):	4
3. METHODOLOGY ADOPTED FOR ENVIRONMENTAL MONITORING	6
3.1 GROUND WATER SAMPLING	6
3.1.1 Reconnaissance Survey:	6
3.1.2 Methodology of Sampling:	6
3.2 MARINE WATER, SEDIMENTS & PLANKTON SAMPLING EQUIPMENTS	6
3.2.1 Reconnaissance Survey:	6
3.2.2 Methodology of Sampling:	7
3.2.2.1 Niskin Bottle - Marine Water Sampler	7
3.2.2.2 Plankton Net - Biological Samples	7
3.2.2.3 Grab Sampler - For Marine Sediments	7
3.2.2.4 Selection of Stations, Preservation and Transportation of Samples:	8
3.3 Laboratory Credentials	8
4. COMPILATION OF DATA & INFERENCE	10
4.1 GROUND WATER QUALITY ANALYSIS REPORT	10
4.1.1 GW Analysis Data	10
4.1.2 GW Analysis Inference:	11
4.2 MARINE WATER QUALITY ANALYSIS REPORT	12
4.2.1 Analytical Data - Physicochemical Parameters during monsoon	13
4.2.2 Inference - Physicochemical Parameters during monsoon:	14
4.3.1 Analytical Data - Biological Parameters during monsoon:	15
4.3.2 Inferences - Biological Parameters during monsoon:	16
4.3.2.1 Phytoplankton	16
4.3.2.2 Zooplankton	17
4.3.2.4 Microbiology	17
5. CHAPTER V: CONCLUSION & RECOMMENDATION	18
5.1 Ground Water:	18
5.1.1 Observations from Data:	18
5.1.2 NMIA Pre - Development Activities and impacts anticipated on Ground Water Quality:	18
5.1.3 Further Study Suggested:	18
5.2 Marine Water:	18
5.2.1 Observations from Data:	18
5.2.2 NMIA Pre- Development Activities and impacts anticipated on Marine Water Quality:	19
5.2.3 Further Study Suggested:	19

List of Tables

Table 2-1: Scope of Environmental Monitoring Work as per CIDCO Tender 2

Table 2-2: Details of Ground Water Quality Monitoring Stations as per CIDCO Tender 3

Table 2-3: Details of Marine Water Quality Monitoring Stations as per CIDCO Tender..... 3

Table 2-4: Period/Time of Sampling for this Survey 5

Table 4-1: Ground water analysis at various stations during July 2018 10

Table 4-2: Marine water physicochemical analysis at various stations during July 2018..... 13

Table 4-3: Marine water biological analysis of stations (W1 to W7) during July 2018 15

Table 4-4: Marine water biological analysis of stations (W8 to W13) during July 2018..... 15

List of Figures

Figure 2.1: Map of Surface Marine, Ground Water & Sediment Monitoring Stations as per CIDCO Tender	4
Figure 4.1 : Representation of phytoplankton population & Total genera for <i>July 2018</i>	16
Figure 4.2: Phytoplankton found in samples for July 2018.....	16
Figure 4.3: Graphical representations of Zooplankton Biomass, Population and total group for July 2018	17
Figure 4.4: Zooplankton found in samples for July 2018	17

1. INTRODUCTION

Mumbai Metropolitan Region (MMR) comprises of areas in and around Mumbai city and includes parts of Mumbai, Thane and Raigad Districts. Mumbai is known as the commercial capital of India and MMR is an industrial and technologically advanced region, which has experienced rapid growth in income and employment. The increasing trend in trading, business and financial services, demands highest order of infrastructure. There is need to enhance the capacity of airport as the existing airport in Mumbai experiencing tremendous pressure for meeting the air traffic demands of this vibrant region. Realizing the need of second airport for Mumbai, the Government of Maharashtra granted approval and appointed City & industrial Development Corporation of Maharashtra Limited (CIDCO) as Nodal agency for implementation.

The site for the airport was selected near Panvel in Raigad district of Maharashtra state with central coordinates 18°59'33.00"N and 73°4'18.00"E. The Director General of Civil Aviation (DGCA) has approved the site. Environmental Impact Assessment (EIA) study was conducted by Centre for Environmental Science and Engineering (CESE), Indian Institute of Technology (IIT) Mumbai and updated report submitted in April 2011. Environmental Clearance was granted by Ministry of Environment and Forests vide F. No. 10-53/2009- IA.III dt 22.11.2010 and validity extended vide letter dt 20.12.2017.

Pre-development works for the site has started and as compliance to the Environmental clearance, CIDCO appointed Aditya Environmental Services Pvt. Ltd. (AESPL) to conduct Compliance Environmental Monitoring for the New Mumbai International Airport (NMIA) vide Tender No. C. A. No. 01 / CIDCO/ T&C/ CGM (T&A) / STE (S& A) / 2017-18 (2nd call – 1st Extension) & its Work Order No. CIDCO / T&C / CGM (T & A)/ STE (S-I& A)/2018/1383 dated 07.06.2018.

The sampling locations fixed by CIDCO for compliance monitoring once in each season (Post, pre & during monsoon) for ground water and marine/Surface water quality as per Tender are as given in Chapter II for month from July 2018 – September 2018. The assignment comprises monitoring of following parameters in and around the surrounding project area:

- Ground/Surface water
- Marine water for biological and physicochemical parameters.

2. SCOPE OF MONITORING WORK

2.1 Scope of Monitoring Work as per CIDCO Tender:

Scope of monitoring work as per CIDCO tender are as given below:

Table 2-1: Scope of Environmental Monitoring Work as per CIDCO Tender

Sr. No.	Parameters – as per Annexure B	Location	Frequency	Samples/ Year	Samples/ 2 years
1.	<p>Ground Water Quality (35): Physical Parameters - pH, Temperature, Turbidity, EC, Salinity, TSS, TDS. Chemical Parameters: DO, BOD, COD, Magnesium, Hardness, Alkalinity, Chloride, Sulphate, Fluoride, Sodium, Potassium, Phenol, Total Phosphorous, Total Nitrogen, Sodium Absorption Ratio (SAR), Nitrite-N, Nitrate-N, Calcium. Heavy Metals: Fe, Zn, Mg, Mn, Cd, Cr, Hg. Bacteriological Parameters; Coliform Count. Total Heterotrophic Bacteria. SPC/100ML.</p>	10	10 Stations per season (Post, Pre-& During Monsoon)	30	60
2.	<p>Marine/Surface Water Quality parameters (35): Physico Chemical parameters: PH, Temperature, Turbidity, EC, Salinity (ppt), TSS, TDS. Chemical Parameters: Nitrate-N, Nitrite N, Phosphate-P, Silicate, DO, BOD, COD, O&G, Magnesium, Hardness, Alkalinity, Chloride, Sulphate, Fluoride, Sodium, Potassium, Phenol, Total phosphorus, Total Nitrogen. Heavy Metals: Fe, Zn, Mg, Mn, Cd, Cr, Hg Bacteriological parameters: Coliform Count. Marine Biology: Phytoplankton & Zooplankton</p>	13	13 stations per season (Post, Pre-& During Monsoon)	39	78

2.2 Locations of Monitoring:

Sampling Locations have been specified by CIDCO in its Tender. The monitoring was carried out at the same locations as fixed by CIDCO. Details of monitoring stations for Ground Water, Marine Water- physicochemical & biological and along with location maps showing station locations are as given below:

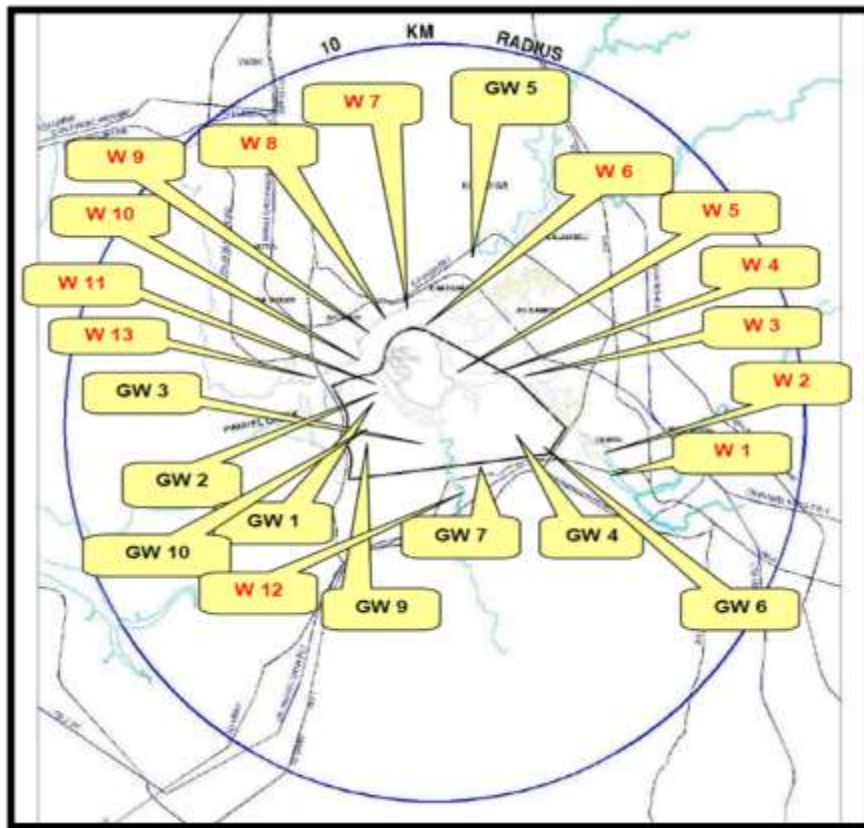
Table 2-2: Details of Ground Water Quality Monitoring Stations as per CIDCO Tender

Station Code	Stations Name
GW1	Open well at Kombadbhuje
GW2	A well near pond at Ganeshpuri
GW3	Open well at Vaghivalivada
GW4	Open well at Koli
GW5	Open well at Kopar
GW6	Open well at Chinchpada
GW7	A well near pond at Pargaon
GW8	A well near pond at Vaghivali
GW9	Open well at Ulwe
GW10	A well near pond at Targhar

Table 2-3: Details of Marine Water Quality Monitoring Stations as per CIDCO Tender

Station Code	Station details / Location
W1	Extreme end of Gadhi River (upstream side)
W2	Near Pargaon village (200m from W1) in Gadhi River
W3	Near Jui Village (300m from W2) in Gadhi River
W4	Near Kopar Khadi (300m from W3) in Gadhi River
W5	Near Vaghivali village (500m from W4) in Gadhi River
W6	Vaghivali creek junction (300m from W5) in Gadhi River
W7	Near Kharghar Rly Station (300m) in Gadhi River
W8	Near Belpada (300m from W7) in Gadhi River
W9	Near Konkan Bhavan (300m from W8) in Gadhi River
W10	Near Divala village (300m from W10) in Gadhi River
W11	At Junction of Ulwe and Gadhi Rivers in Panvel Creek
W12	In Ulwe River
W13	Near Rathi bander in Panvel Creek

Figure 2.1: Map of Surface Marine, Ground Water & Sediment Monitoring Stations as per CIDCO Tender



2.3 Period/Time of Sampling (July – September 2018):

The sampling survey was carried out as per following schedule during July 2018 – September 2018. Ground Water and Marine Water samples collected for monsoon season (July 2018)

Table 2-3: Period/Time of Sampling for this Survey

Month	Parameter	Sampling Stations	Dates of Sampling	Time Period
July 2018	Ground Water	GW1, GW2, GW3, GW4, GW5, GW6, GW7, GW8, GW9, GW10	19.07.18	Grab Sample
	Marine Water	W1, W2, W3, W4, W5, W12	30.07.18	Grab Sample
		W6, W7, W8, W9, W10, W11, W13	31.07.18	

3. METHODOLOGY ADOPTED FOR ENVIRONMENTAL MONITORING

3.1 GROUND WATER SAMPLING

3.1.1 Reconnaissance Survey:

The villages in study area use ground water from open/bore well and use it for drinking and other domestic purposes. Ground water gets contaminated due to bad sanitary habits such as washing of utensils, cattle and bathing and location of septic tanks in/near the open wells.

3.1.2 Methodology of Sampling:

Ground water sample is collected by using containers and the sampling container is rinsed before using it for storing water samples. Ground water samples are stored in two separate containers for Physicochemical & Microbiological analysis and preservatives added as recommended by Standard Methods APHA, stored in cold storage box and transferred to the laboratory for the further analysis.



Ground Water Sampling in Progress

3.2 MARINE WATER, SEDIMENTS & PLANKTON SAMPLING EQUIPMENTS

3.2.1 Reconnaissance Survey:

The study area represents complex hydrodynamic system. The Ulwe river flows down through the mountains (to the south) in the centre of project site and joins the Panvel creek. The Gadhi river flows from the East to the West. The Ulwe river will be diverted/retrained as part of the project and the Gadhi river will be partly retrained towards the northern part of the site. The river Gadhi receives sewage from Panvel town and nearby areas. Both the rivers drain into the Panvel creek which drains into the Arabian sea to the west. The Panvel creek also received effluents from CETP at MIDC Taloja and sewage from NMMC STPs in Nerul.

3.2.2 Methodology of Sampling:

3.2.2.1 Niskin Bottle - Marine Water Sampler

This Water Sampler is used to collect samples at various water depths and can operate at any depth on a cable or line with a messenger.



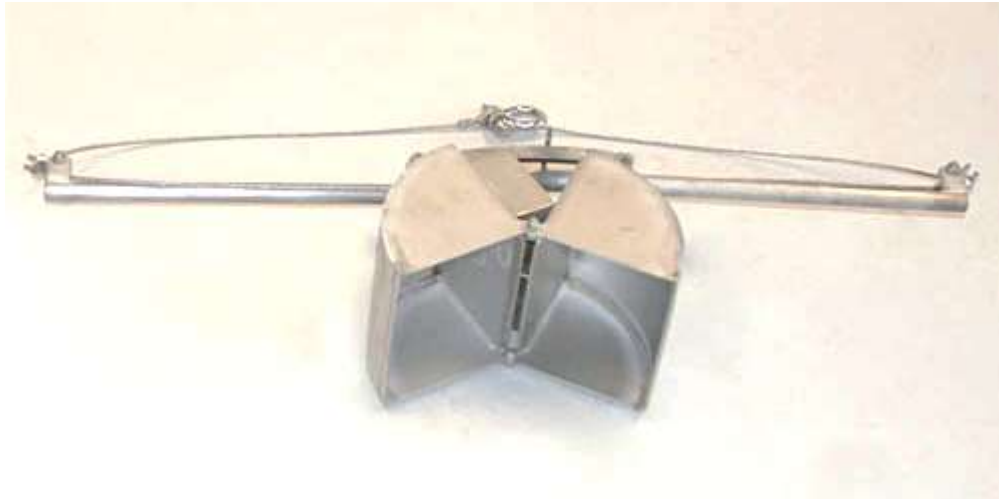
3.2.2.2 Plankton Net - Biological Samples

This plankton net operates a cable or lined by hand or behind a boat, it can be towed vertically or horizontally. Nets comes in varieties of size (Mesh no 00 equal an aperture of 0.30 inches)



3.2.2.3 Grab Sampler - For Marine Sediments

Sediment grab operate at any depth on a cable or line by free fall (without a messenger). It is extremely heavy and can take samples of hardest rocky ocean bottoms.



Grab Sampler

3.2.2.4 Selection of Stations, Preservation and Transportation of Samples:

Marine water samples were collected from sampling locations in Gadhi River, Ulwe River and Panvel Creek at the locations indicated by CIDCO – in all, 13 samples were collected from 13 sampling locations for physicochemical and Biological samples (Stations 1 to 10 are located in Gadhi River & Station 11 & 13 are Panvel Creek while station 12 in Ulwe River. A good amount of mangrove vegetation was noted on either side of stream 4 to 6. Sampling locations were approached by boats (wherever possible) and collection done irrespective of tide. Sampling were done only for surface water. The samples were preserved and taken to laboratory using vehicle on same day.

3.3 Laboratory Credentials

Sampling and analysis were done by laboratory of Aditya Environmental Services Pvt Ltd located at Plot P-1, MIDC Commercial plots, Mohopada, Tal Panvel, Dist. Raigad.

- Our Environmental Laboratory is recognized by Ministry of Environment & Forest (MoEFCC), Govt. of India under Environment (Protection) Act, 1986.
- Laboratory is also certified ISO 9001:2015 and OHSAS 18001:2007.
- Laboratory is accredited under ISO/IEC 17025:2005 (TC-7085) for water, wastewater and soil parameters
- Environmental sampling conducted by our experienced, qualified environmental staff & Analysis and reporting by approved Government Analyst.
- Instruments used for sampling are from reputed manufacturer & are regularly calibrated.

- Chemicals used are Analytical Reagent grade and from reputed manufacturer.
- Analytical Instrumentation used in the laboratory is regularly calibrated.
- We have regular program of Preventive & Annual Maintenance for all critical equipment.
- Ground Water, Soil Analysis - using APHA, BIS, ASTM & CPCB standards Methods for water Analysis.
- Standard Methods Adopted in the laboratory are those prescribed by APHA, BIS, ASTM & CPCB for water, waste & marine water analysis using methods as per NIO (National Institute of Oceanography) Manual.
- We have CRMs (Certified Reference Material) for heavy metals from reputed manufacturers for heavy metals and Standard sea water which we use for analysis.
- We are regularly participating in Proficiency testing with reputed Organizations like Central Pollution Control Board (CPCB), Goa State Pollution Control Board and others as also Intra laboratory QC testing to check performance of our chemists.
- Overall approach & methodology is with Annexure IA Scope of the work & the Best practices as per prevailing norms of Central Pollution Board /Ministry of Environment & Forest etc. /Internationally adopted practices.

4. COMPILATION OF DATA & INFERENCE**4.1 GROUND WATER QUALITY ANALYSIS REPORT****4.4.1 GW Analysis Data**

The physicochemical analysis of ground water study showed considerable variation and is compiled and presented below:

Table 4-1: Ground water analysis at various stations during July 2018

Sr. No.	Sampling Locations	GW 1	GW 2	GW 3	GW 4	GW 5	GW 6	GW 7	GW 8	GW 9	GW 10
	Sampling month	19.07.2018									
1	pH	7.23	7.40	7.27	7.21	7.30	7.16	7.22	7.36	7.70	7.12
2	Temperature	27.9	28.0	27.2	28.1	28.1	28.0	27.9	28.0	28.1	28.0
3	Turbidity	BDL	BDL	BDL	BDL	BDL	BDL	BDL	BDL	BDL	BDL
5	Electrical Conductivity	208.95	212.6	223.88	137.32	2.0	210.8	194.03	179.1	164.18	164.18
6	Salinity	1.1	0.9	1.67	0.8	214.3	2.2	2.0	1.8	1.9	2.2
7	TSS	14	12	28	12	22	14	16	10	10	14
8	Total Dissolved Solid	140	140	150	90	140	140	130	120	110	110
9	Dissolved Oxygen	6.5	6.4	6.3	6.0	6.5	6.4	6.5	6.4	6.0	6.2
10	BOD	10	12	14	08	06	10	10	08	12	08
11	COD	30	40	50	30	20	40	40	20	40	20
12	Hardness (as CaCO ₃)	64	70	120	86	100	110	112	78	88	78
13	Alkalinity	86	66	84	54	70	72	70	48	70	70
14	Chlorides (as Cl)	40	46	82	40	62	76	76	52	52	46
15	Sulphate (as SO ₄ ⁻²)	18	26	16	12	40	36	28	40	36	42
16	Fluoride (as F)	BDL	BDL	BDL	BDL	BDL	BDL	BDL	BDL	BDL	BDL
17	Sodium (as Na)	02	03	02	03	02	01	03	02	02	02
18	Potassium (as K)	04	08	06	08	04	06	10	08	06	06
19	Phenol	BDL	BDL	BDL	BDL	BDL	BDL	BDL	BDL	BDL	BDL
20	Total phosphorous	BDL	BDL	BDL	BDL	BDL	BDL	BDL	BDL	BDL	BDL
21	Total Nitrogen (TKN)	BDL	BDL	BDL	BDL	BDL	BDL	BDL	BDL	BDL	BDL
22	Sodium absorption ratio	0.1	0.1	0.1	0.1	0.1	0.1	0.1	0.1	0.1	0.1
23	Nitrite - N	BDL	BDL	BDL	BDL	BDL	BDL	BDL	BDL	BDL	BDL
24	Nitrate -N	BDL	BDL	BDL	BDL	BDL	BDL	BDL	BDL	BDL	BDL
25	Calcium (as Ca)	20.8	17.6	30.4	24	28.8	28	35.2	20.8	22	20.8
26	Iron (as Fe)	0.11	0.08	0.10	0.02	0.08	0.10	0.06	0.04	0.10	0.06
27	Zinc (as Zn)	BDL	BDL	BDL	BDL	BDL	BDL	BDL	BDL	BDL	BDL
28	Magnesium (as Mg)	2.88	5.28	10.6	6.24	6.72	9.6	5.76	6.24	7.92	6.24
29	Manganese (as Mn)	BDL	BDL	BDL	BDL	BDL	BDL	BDL	BDL	BDL	BDL
30	Cadmium (as Cd)	BDL	BDL	BDL	BDL	BDL	BDL	BDL	BDL	BDL	BDL
31	Chromium (as Cr)	BDL	BDL	BDL	BDL	BDL	BDL	BDL	BDL	BDL	BDL
32	Mercury (as Hg)	BDL	BDL	BDL	BDL	BDL	BDL	BDL	BDL	BDL	BDL
33	Coliform	Present	Present	Present	Present	Present	Present	Present	Present	Present	Present
34	Heterophilic Bacteria (SPC/100 ml)	11.7 x 10 ³	9.6 x 10 ³	10.4 x 10 ³	12.3 x 10 ³	11.5 x 10 ³	10.9 x 10 ³	13.2 x 10 ³	9.9 x 10 ³	12.9 x 10 ³	11.1 x 10 ³

GW1: Open Well at Kombadbhuje; GW2: Well near pond at Ganeshpuri; GW3: Open well at Vaghivalivada; GW4: Open Well at Koli; GW5: Open well at Kopar; GW6: Open well at Chinchpada; GW7: A well Near Pargaon; GW8: Well near Vaghivali; GW9: Open well at Ulwe; GW10: Well near pond at Targhar

BDL: Below Detectable Limit

4.1.2 GW Analysis Inference:

The ground water quality showed considerable variation. Some ground water parameters were within desirable limit, some between desirable and permissible limit and few exceeded the permissible limit. The ground water not fully complied the quality requirements as per IS 10500 revised in 2012 for purpose of drinking water.

The quality of collected ground water was not suitable for drinking purpose due to the presence of coliform & heterotrophic bacteria at all locations i.e. Koli, Kopar, Pargaon, Chinchpada, Vaghivalivada, Ulwe, Ganeshpuri, Vaghivali, Targhar & Kombadbhuje. Proper treatment of ground water required before consumption.

4.2 MARINE WATER QUALITY ANALYSIS REPORT

Surface Marine water samples were collected for different Physiochemical and Biological parameters from 13 stations during 30th to 31st July 2018. Analysis part is mention in subsequent sections below.



Collection of water sample



Noting Down Water Temperature



Preserving of phytoplankton sample



Fixing DO Sample



Collection of Zooplankton Samples



4.2.1 Analytical Data - Physicochemical Parameters during Monsoon

Table 4-2: Marine water physicochemical analysis of various stations of project area during July 2018

Sr. No.	Parameter	W1	W2	W3	W4	W5	W6	W7	W8	W9	W10	W11	W12	W13	Unit
		S	S	S	S	S	S	S	S	S	S	S	S	S	
1.	pH	6.50	6.62	6.72	6.48	6.43	6.82	6.25	6.47	6.78	6.23	6.53	6.63	6.64	--
2.	Temperature	24.7	25.3	25.1	24.6	24.1	24.0	24.0	24.6	24.0	24.4	24.6	24.1	24.0	°C
3.	Turbidity	2.0	2.6	2.6	2.2	2.5	1.8	2.0	2.4	1.3	1.8	1.6	2.0	2.1	NTU
4.	Electrical Conductivity	1805	12582	9197	12149	13313	12701	12358	12373	11910	12626	12298	11701	12298	µS/Cm
5.	Salinity	13.1	13.4	14.3	13.0	13.8	13.2	13.1	13.6	13.1	13.8	13.0	13.2	13.6	ppt
6.	TSS	112	124	132	124	128	102	98	124	92	128	102	114	102	mg/l
7.	TDS	9210	8430	9250	8140	8920	8510	8280	8290	7980	8460	8240	7840	8240	mg/l
8.	Nitrite - N	BDL	BDL	BDL	BDL	BDL	BDL	BDL	BDL	BDL	BDL	BDL	BDL	BDL	mg/l
9.	Nitrate -N	BDL	BDL	BDL	BDL	BDL	BDL	BDL	BDL	BDL	BDL	BDL	BDL	BDL	mg/l
10.	Phosphate - P	BDL	BDL	BDL	BDL	BDL	BDL	BDL	BDL	BDL	BDL	BDL	BDL	BDL	mg/l
11.	Silicate	BDL	BDL	BDL	BDL	BDL	BDL	BDL	BDL	BDL	BDL	BDL	BDL	BDL	mg/l
12.	DO	5.2	5.0	5.8	5.5	5.3	5.8	5.6	5.5	5.8	5.5	5.6	5.6	5.2	mg/l
13.	BOD	12	22	22	18	20	14	16	20	12	32	34	18	22	mg/l
14.	COD	42	70	70	40	60	50	50	70	40	100	120	60	80	mg/l
15.	Oil & Grease	BDL	BDL	BDL	BDL	BDL	BDL	BDL	BDL	BDL	BDL	BDL	BDL	BDL	mg/l
16.	Hardness	340	346	266	372	356	248	398	340	166	404	460	410	320	mg/l
17.	Sodium, Na	32	38	28	32	28	30	25	20	24	28	26	22	26	mg/l
18.	Alkalinity	356	360	320	420	380	320	420	352	182	420	358	324	288	mg/l
19.	Chloride	7454	7624	8137	7397	7852	7511	7454	7738	7454	7852	7397	7511	7738	mg/l
20.	Sulphate as SO ₄	74.3	88.4	86.2	86.8	112.3	74.6	80.4	88	48.3	94.6	113	88.6	90	mg/l
21.	Fluoride	BDL	BDL	BDL	BDL	BDL	BDL	BDL	BDL	BDL	BDL	BDL	BDL	BDL	mg/l
22.	Potassium K	10	12	08	14	14	12	08	06	08	10	12	11	12	mg/l
23.	Phenol	BDL	BDL	BDL	BDL	BDL	BDL	BDL	BDL	BDL	BDL	BDL	BDL	BDL	mg/l
24.	Total phosphorous	BDL	BDL	BDL	BDL	BDL	BDL	BDL	BDL	BDL	BDL	BDL	BDL	BDL	mg/l
25.	Total Nitrogen (TKN)	BDL	BDL	BDL	BDL	BDL	BDL	BDL	BDL	BDL	BDL	BDL	BDL	BDL	mg/l
26.	Iron as Fe	0.10	0.14	0.08	0.11	0.18	0.10	0.09	0.10	0.10	0.08	0.08	0.15	0.10	mg/l
27.	Zinc as Zn	BDL	BDL	BDL	BDL	BDL	BDL	BDL	BDL	BDL	BDL	BDL	BDL	BDL	mg/l
28.	Magnesium as Mg	22.3	24.3	18.6	32.6	28.2	22.4	28.6	24	12.8	28.6	43.1	35.6	24.3	mg/l
29.	Manganese Mn	BDL	BDL	BDL	BDL	BDL	BDL	BDL	BDL	BDL	BDL	BDL	BDL	BDL	mg/l
30.	Cadmium as Cd	BDL	BDL	BDL	BDL	BDL	BDL	BDL	BDL	BDL	BDL	BDL	BDL	BDL	mg/l
31.	Chromium as Cr	BDL	BDL	BDL	BDL	BDL	BDL	BDL	BDL	BDL	BDL	BDL	BDL	BDL	mg/l
32.	Mercury as Hg	BDL	BDL	BDL	BDL	BDL	BDL	BDL	BDL	BDL	BDL	BDL	BDL	BDL	mg/l

4.2.2 Inference - Physicochemical Parameters during Monsoon:

The pH value ranged from 6.23 to 6.82 at surface basic nature of water. Salinity was low due to influx of fresh water and collection during monsoon. The total suspended solids were found due to accumulation of discharge from surrounding villages in the Panvel Creek and Ulwe river respectively.

The Total dissolved solids were noted high which suggest the high concentration of dissolved salts and deteriorated quality of water. Total organic carbon was noted low which suggest there were no accumulation of organic matter in water body.

Dissolve Oxygen level more than 5 mg/l is within normal limit suggest good amount of dissolved oxygen in the water body to support living organism. BOD value suggests the presence of biodegradable organic wastes present in water body which comes as domestic waste, discharge of sewage from surrounding areas and effluents from CETP at MIDC Taloja and sewage from NMMC STPs in Nerul. COD value indicates the amount of oxidable material present in water body.

The Sulphate value were found in low concentration which represents anthropogenic contamination. The concentration of Manganese, Magnesium and Iron were low due natural origin.

4.3 MARINE WATER QUALITY ANALYSIS REPORT (BIOLOGICAL PARAMETERS)

4.3.1 Analytical Data - Biological Parameters during Monsoon:

Biological parameters viz. Phytoplankton, Zooplankton and Microbiology were analyzed and compiled data is presented below:

Table 4-3: Marine water biological analysis of various stations of project area during July 2018

Parameter	W 1	W 2	W3	W4	W5	W6	W7
	S	S	S	S	S	S	S
Phytoplankton							
Population (nox10 ³ /L)	168.4	142.8	132.6	116.8	198.4	48.8	56.2
Total Genera	22	18	13	18	11	16	14
Major Genera	Scenedesmus Thalassiosira Leptocylindrus Navicula	Nitzschia, Scenedesmus, Thalassiosira, Leptocylindrus	Thalassiosira, Leptocylindrus, Navicula, Skeletonema	Thalassiosira Leptocylindrus, Chaetoceros, Skeletonema	Thalassiosira, Leptocylindrus, Navicula, Skeletonema	<i>Nitzschia,</i> <i>Thalassiosira,</i> <i>Leptocylindrus,</i> <i>Skeletonema</i>	<i>Pleurosigma,</i> <i>Skeletonema,</i> <i>Nitzschia,</i> <i>Thalassiosira</i>
Diversity Index	2.16	1.32	1.38	1.67	1.34	2.08	2.56
Zooplankton							
Population (nox 10 ³ /100m ³)	91.00	102.32	88.49	2.72	1.36	28.98	9.32
Total Group	4	4	3	3	5	8	6
Major Groups	Copepods	Copepods	Copepods	Copepods Gastropods	Gastropods, foraminiferans	Copepods Gastropods	Copepods Gastropods
Biomass (ml/100m ³)	22.00	7.78	5.42	3.12	5.56	118.14	57.61
Diversity Index	0.16	0.00	0.00	0.21	0.59	1.02	0.79
Microbiology							
Coliform/100 ml	*P	*P	*P	*P	*P	*P	*P

Table 4-4: Marine water biological analysis of stations (W8 to W13) during July 2018

Parameter	W8	W9	W10	W11	W12	W13
	S	S	S	S	S	S
Phytoplankton						
Population (nox10 ³ /L)	42.6	18.6	16.4	36.2	265.2	32.4
Total Genera	15	10	14	9	11	18
Major Genera	<i>Skeletonema,</i> <i>Nitzschia,</i> <i>Cyclotella,</i> <i>Thalassiosira</i>	<i>Skeletonema,</i> <i>Nitzschia,</i> <i>Guinardia,</i> <i>Thalassiosira</i>	<i>Skeletonema,</i> <i>Cyclotella,</i> <i>Rhizosolenia</i> <i>Nitzschia</i>	<i>Skeletonema,</i> <i>Nitzschia,</i> <i>Leptocylindrus,</i> <i>Thalassiosira</i>	<i>Thalassiosira,</i> <i>Leptocylindrus,</i> <i>Pleurosigma,</i> <i>Navicula</i>	<i>Thalassiosira,</i> <i>Chaetoceros,</i> <i>Skeletonema,</i> <i>Nitzschia</i>
Diversity Index	2.21	2.18	2.36	2.18	1.48	2.34
Zooplankton						
Population (no x 10 ³ /100m ³)	42.71	46.24	48.03	42.06	88.42	32.82
Total Group	6	5	6	5	6	7
Major Groups	Copepods Gastropods	Copepods Gastropods	Copepods Gastropods	Copepods Gastropods	Polychaete, lamellibranchs	Copepods Gastropods
Biomass (ml/100m ³)	146.06	122.02	182.59	162.45	44.12	126.32
Diversity Index	0.83	0.82	0.90	0.94	1.38	1.04
Microbiology						
Coliform/100 ml	*P	*P	*P	*P	*P	*P

4.3.2 Inferences - Biological Parameters during Monsoon:

4.3.2.1 Phytoplankton

In July 2018, Phytoplankton population density ranges from 16.4-256.2 x 10³/l at surface water of all 13 stations. Highest phytoplankton population at surface water of station 12 may be due to influx of domestic water from surrounding villages; total generic groups ranges from 9-18 nos. at surface water of 13 stations. Maximum generic diversity 18 no. is observed at surface water of Station 4 during July 2018.

Thalassiosira, *Skeletonema*, *Pleurosigma* and *Nitzschia*, are most common ones, followed by rest of observed genera like *Leptocylindrus*, *Scenedesmus*, *Navicula*.

The other fresh water phytoplankton genera found are *Scenedesmus*, *Oscillatoria* in Gadhi River (Station 2). *Nitzschia*, *Thalassiosira* and *Navicula* are common Genera noted in all stations. Graphical representations of phytoplankton population and total genera is represented in **Figure 4.1**.

The graph below represents the population of phytoplankton is more at station 12; and less at station 10, which represents there is discharge of sewage and domestic waste. The phytoplankton trend with respect to total number of genera is almost same throughout all stations. Some of the major genera seen were photographed and shown in **figure 4.2**.

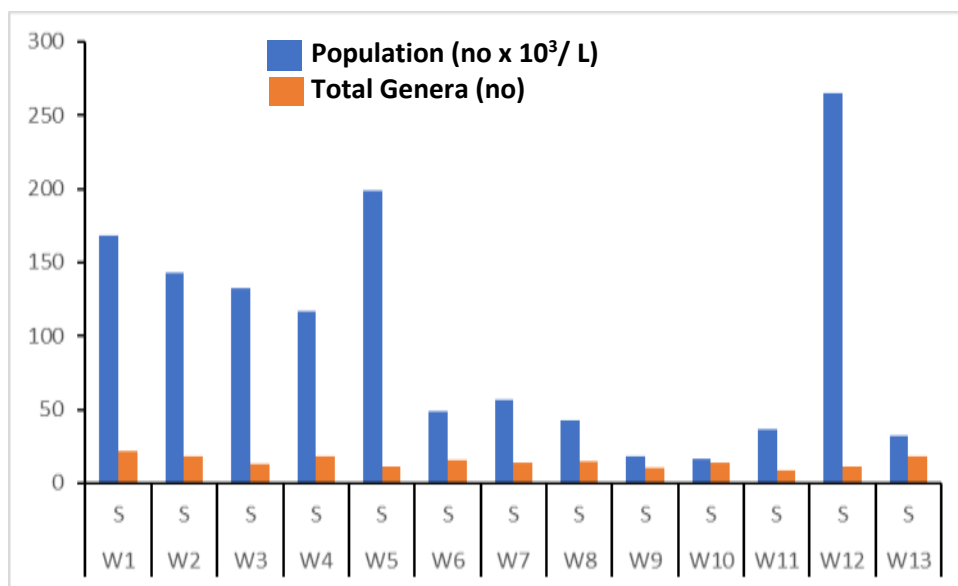


Figure 4.1 : Representation of phytoplankton population & Total genera for July 2018

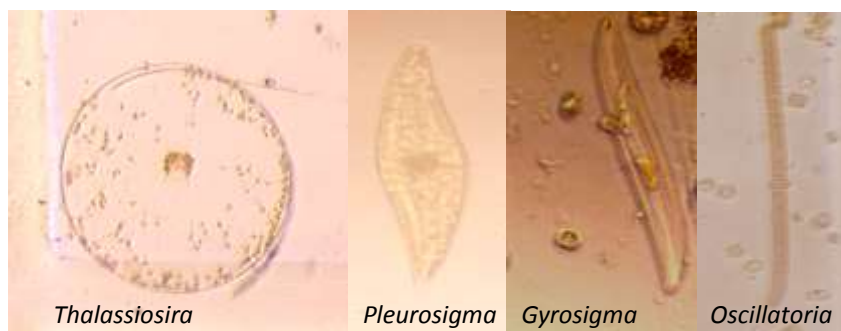


Figure 4.2: Phytoplankton found in samples for July 2018

4.3.2.2 Zooplankton

In July 2018, the zooplankton biomass ranged from 3.12 to 182.59 ml/100 m³ with population density of 1.36 to 102.32 no x 10³/100m³ while having good faunal group ranging from 3-8 nos. The zooplankton was noted with good population and group diversity. Copepods, Gastropods & polychaetes were common groups observed as, figures 4.3 represents zooplankton standing stock graphically.

The graph below represents that average standing stock reported from all stations; Station 5 shows lowest population as compared to Station 2; and station 4 shows lowest biomass and Station 10 shows highest biomass respectively.

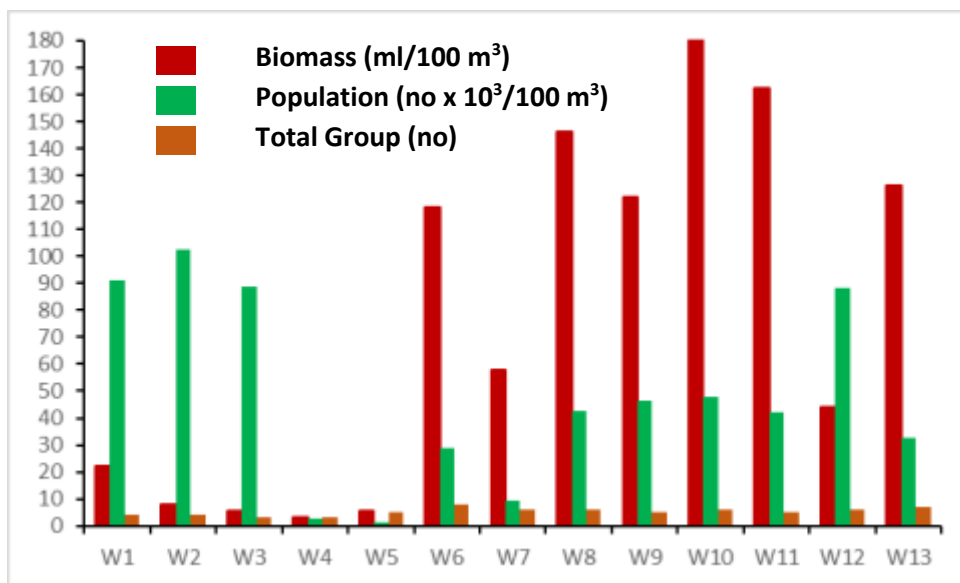


Figure 4.3: Graphical representations of Zooplankton Biomass, Population and total group for July 2018



Figure 4.4: Zooplankton found in samples for July 2018

4.3.2.4 Microbiology

Coliform microbes were present at all stations in surface level. No specific trend was observed.

5. CHAPTER V: CONCLUSION & RECOMMENDATION

Based on the study of activities planned during pre-development works and on the basis of the environmental baseline monitoring results, certain issues have been identified and steps proposed to mitigate the environmental impacts as suggested below:

5.1 Ground Water:

5.1.1 Observations from Data:

Ground Water quality is poor and fails to meet IS 10500:2012 norms at number of locations. The area of the site is low lying and partially inundated during high tide. Ground water table is high and mostly open dug wells are seen in rural areas.

5.1.2 NMIA Pre - Development Activities and impacts anticipated on Ground Water Quality:

Construction activities at NMIA during pre-development works include:

- demolition of hill which will generate of material like murum and rock which will be utilized within site and balance will be taken to fill up nearby areas
- Site level is currently low and will be increased to +6 to +7m above existing GL by using excavated material.
- The area of the site is partially inundated during high tide. This area will be filled up to make available land for airport development

The ground water quality will get affected by above activities.

5.1.3 Further Study Suggested:

- As per clause (vii) under specific conditions of the Environmental clearance granted for the NMIA project by MOEFCC, “systematic and periodic monitoring mechanism need to be put in place by CIDCO to assess the impact on sub surface flow /impact on aquifers as well as surface water bodies in different seasons. Necessary additional environmental protection measures to be adopted to address the impact of proposed development in coastal sub surface flow as well as impact on aquifers”.

The above study needs to be undertaken by a Functional Area Expert specializing in Hydrology/Geo- hydrology urgently in view of the fact that pre-development activities have started.

5.1.4 Mitigation Measures for Rehabilitated Settlements:

CIDCO needs to make adequate and clean piped water supply available for people to be accommodated in Rehabilitated settlements.

5.2 Marine Water:

5.2.1 Observations from Data:

Marine Water quality is moderate, may be due to hindrances.

(July – September 2018)

5.2.2 NMIA Pre- Development Activities and impacts anticipated on Marine Water Quality:

Construction activities at NMIA during pre-development works include:

- demolition of hill which will generate of material like murum and rock which will be utilized within site and balance will be taken to fill up nearby areas.
- Site level is currently low and will be increased to +6 to +7m above existing GL by using excavated material.
- The area of the site is partially inundated during high tide. This area will be filled up to make available land for airport development

The marine water quality may get affected by activities such as land filling, diversion of courses of Ulwe and training of Gadhi rivers.

5.2.3 Further Study Suggested:

The re-coursing of Ulwe river and training of Gadhi river with provision of special channel to the North of the site in the proposed Master plan needs detailed studies so far as its impacts on marine water quality and drainage on the entire area is considered. The Environmental clearance has several clauses pertaining to this as below:

- (1) The proposed re-coursing of tidally influenced water body outlets from Ulwe river has a large cross-sectional area at the middle with the river/creek on either end remaining unchanged with its natural course. The whole system should function as it was functioning earlier without airport project. Surface runoff should not be let into the channel just because the area of cross section is large. The whole airport area will be reclaimed, and the level raised to 7m whereas the existing level all around the airport will continue to be low in its natural state. There will be flow all around due to surface runoff. This additional quantity must be collected by appropriate drainage system and let into Gadhi River and not into the recoursing channel. The recourse channel may be able to take it but not the river or creek on either side of the channel. This aspect shall be examined by CIDCO in details to avoid the flooding of the low-lying areas besides inducting other hydrological and environmental studies.
- (2) The entire system shall be studied as one composite system with appropriate boundary conditions to reflect the worst conditions – minimum 100 years to be specified and compliance ensured such as -flooding, surface runoff not only from the airport but also from surrounding areas as well, normal flow, tidal flow due to tidal surge having a long return period, possible obstructions to flow, tributaries joining the main river etc. so as to take appropriate protection and remedial measures. Due to construction of recourse Channels and also due to tail end of the Gadhi & Ulwe Rivers into Panvel Creek, there is a need to prepare a Comprehensive Master Plan for Surface drainage and Flood protection, keeping in view the proposed developments. CIDCO shall submit the above Master Plan to the Ministry.
- (3) On the northern part of the airport there is a secondary channel of the Gadhi River which will be filled up for the airport runway construction. This will be replaced by a

(July – September 2018)

shorter channel along the northern boundary of the airport. The channel shall be designed appropriately through overall modeling study so that the channel provides tidal water to the mangrove park and moderate tidal flows under worst environmental conditions. Need for widening and deepening of Gadhi River may also be studied simultaneously, if required. The revised widths and depths of recourse channels shall be determined with modified drainage and worst rainfall/tide conditions including appropriate factor of safety.

The above studies need to be undertaken on priority in view of the fact that pre-development activities have started.

5.2.4 Mitigation Measures for protection of Marine Water Quality:

Mitigation measures taken up at NMIA during pre-development works are as follows:

- landfilling is done in areas inundated during high tide, taking care that there is no disposal of debris in inter tidal area, nor any water way is obstructed
- for excavated areas and freshly filled up areas, proper garland drains leading to settlement basins followed by filter bunds are provided so that rainwater does not carryover the loose excavated material into marine areas.
- polyelectrolytes are used to help settle loose suspended material in the settlement basins.