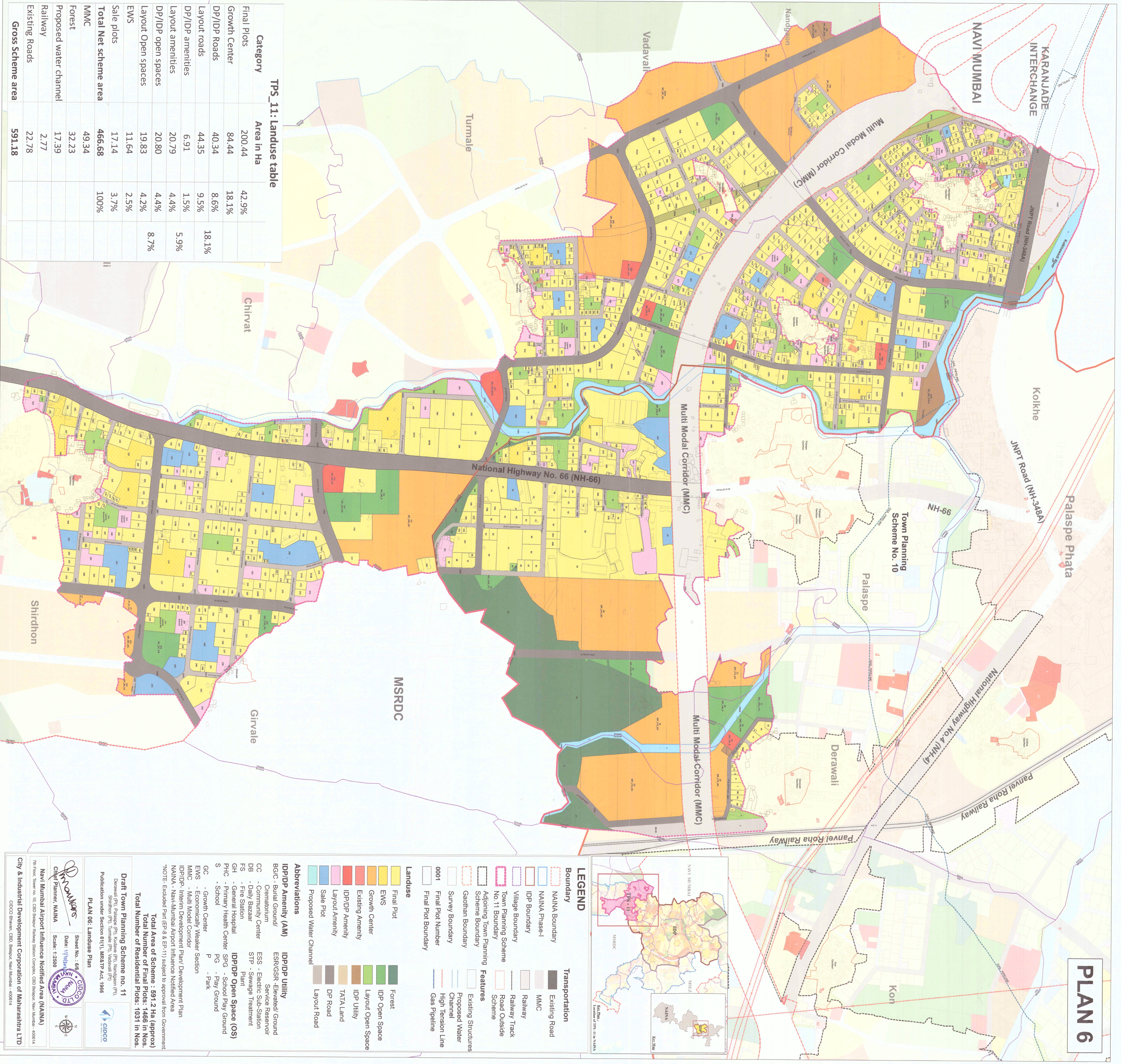
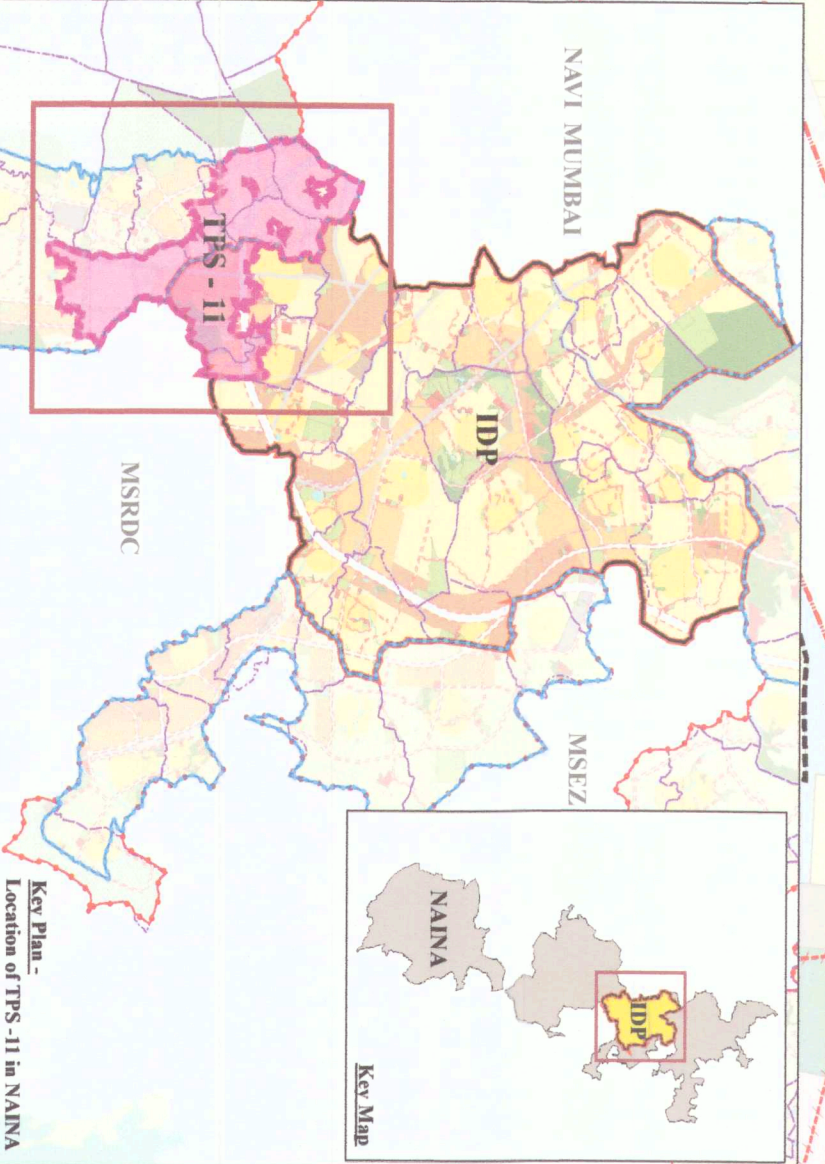


PLAN 6



TPS_11: Landuse table

Category	Area in Ha	
Final Plots	200.44	42.9%
Growth Center	84.44	18.1%
DP/IDP Roads	40.34	8.6%
Layout roads	44.35	9.5%
DP/IDP amenities	6.91	1.5%
Layout amenities	20.79	4.4%
DP/IDP open spaces	20.80	4.4%
Layout Open spaces	19.83	4.2%
EWS	11.64	2.5%
Sale plots	17.14	3.7%
Total Net scheme area	466.68	100%
MMNC	49.34	
Forest	32.23	
Proposed water channel	17.39	
Railway	2.77	
Existing Roads	22.78	
Gross Scheme area	591.18	



LEGEND

Boundary	NAINA Boundary	Transportation	Existing Road
	NAINA Phase-I		MMC
	IDP Boundary		Railway
	Village Boundary		Railway Track
	Town Planning Scheme No.11 Boundary		Road Outside Scheme
	Adjoining Town Planning Scheme Boundary		
	Gaolhan Boundary	Features	Existing Structures
	Survey Boundary		Proposed Water Channel
	Final Plot Number		High Tension Line
	Final Plot Boundary		Gas Pipeline
Landuse			
	Final Plot		Forest
	EWS		IDP Open Space
	Growth Center		Layout Open Space
	Existing Amenity		IDP Utility
	IDP/IDP Amenity		TATA Land
	Layout Amenity		DP Road
	Sale Plot		Layout Road
	Proposed Water Channel		

Abbreviations

IDP/IDP (AM)	IDP/IDP Utility
BGIC - Burial Ground/ Crematorium	ESR/GSR - Elevated/ Ground Service Reservoir
CC - Community Center	ESS - Electric Sub-Station
DB - Daily Bazaar	STP - Sewage Treatment Plant
FS - Fire Station	IDP/IDP Open Space (Os)
GH - General Hospital	PHC - Primary Health Center
PG - School	PG - School Play Ground
S - School	P - Park
GC - Growth Center	
EMWS - Economically Weaker Section	
MMNC - Multi Model Corridor	
IDP/IDP - Interim Development Plan/ Development Plan	
NAINA - Navi-Mumbai Airport Influence Notified Area	

*NOTE: Excluded Part (EP-8 & EP-11) subject to approval from Government.

Total Area of Scheme : 591.2 Ha (approx)
Total Number of Final Plots : 1466 in Nos.
Total Number of Residential Plots : 1031 in Nos.

PLAN 06: Landuse Plan

Draft Town Planning Scheme no. 11
 Derawali (P), Palasphe (P), Kulkhe (P), Nandgaon (P), Shirdhon (P), Turmale (P), Vadavali (P)

Publication under Section 61(1), MR&TP Act, 1966

Sheet No. : 66
 Date : 17/03/2010
 Scale : 1:2500

City & Industrial Development Corporation of Maharashtra LTD
 CIDCO Bhawan, CIDCO Bhavan, Navi Mumbai - 400614