

Legend

- NAINA Boundary
- Village Boundary
- Town Planning Scheme no. 8 Boundary
- Gaithan Boundary
- Town Planning Scheme Boundary
- Integrated Township Project (ITP) Boundary

Hill Slope & its Buffer

- Hill Slope Buffer (30 m)
- Hill Slope (1:5)

Power/ Gas Lines

- HT Line
- Towers
- GAIL Gas Pipeline
- HP Gas Pipeline
- Reliance Gas Pipeline

Original Plot

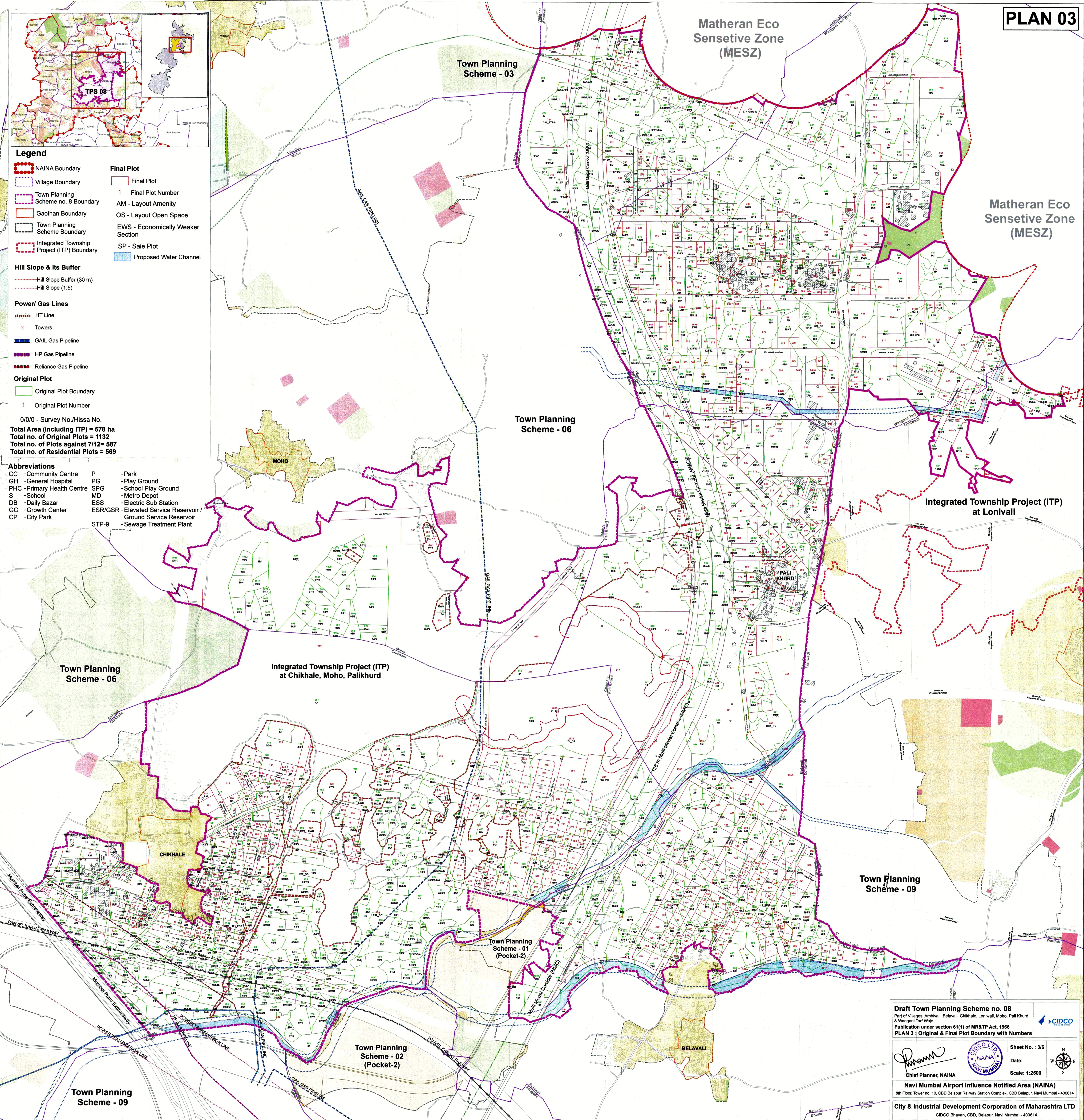
- Original Plot Boundary
- Original Plot Number

0/0/0 - Survey No./Hissa No.

Total Area (including ITP) = 578 ha
Total no. of Original Plots = 1132
Total no. of Plots against 7/12= 587
Total no. of Residential Plots = 569

Abbreviations

CC - Community Centre	P - Park
GH - General Hospital	PG - Play Ground
PHC - Primary Health Centre	SPG - School Play Ground
S - School	MD - Metro Depot
DB - Daily Bazar	ESS - Electric Sub Station
GC - Growth Center	ESR/GSR - Elevated Service Reservoir / Ground Service Reservoir
CP - City Park	STP-9 - Sewage Treatment Plant



Draft Town Planning Scheme no. 08
 Part of Villages: Ambivali, Belavali, Chikhale, Lonivali, Moho, Pali Khurd & Wangari Tarf Wale.
 Publication under section 6(1) of MR&TP Act, 1986
PLAN 3 : Original & Final Plot Boundary with Numbers

CIDCO LTD NAVI MUMBAI

Chief Planner, NAINA

Sheet No. : 3/6
 Date: _____
 Scale: 1:2500

Navi Mumbai Airport Influence Notified Area (NAINA)
 8th Floor, Tower no. 10, CBD Belapur Railway Station Complex, CBD Belapur, Navi Mumbai - 400614

City & Industrial Development Corporation of Maharashtra LTD
 CIDCO Bhavan, CBD, Belapur, Navi Mumbai - 400614