

LEGEND

NAINA Boundary	Final Plot number
IDP Boundary	Final Plot boundary
Village Boundary	Gas Pipeline
Town Planning Scheme No.10 Boundary	MMC
Adjoining Town Planning Scheme Boundary	Existing roads
Gaothan Boundary	Railway
High Tension Line	Railway Track
Gas Pipeline	Existing Tributary

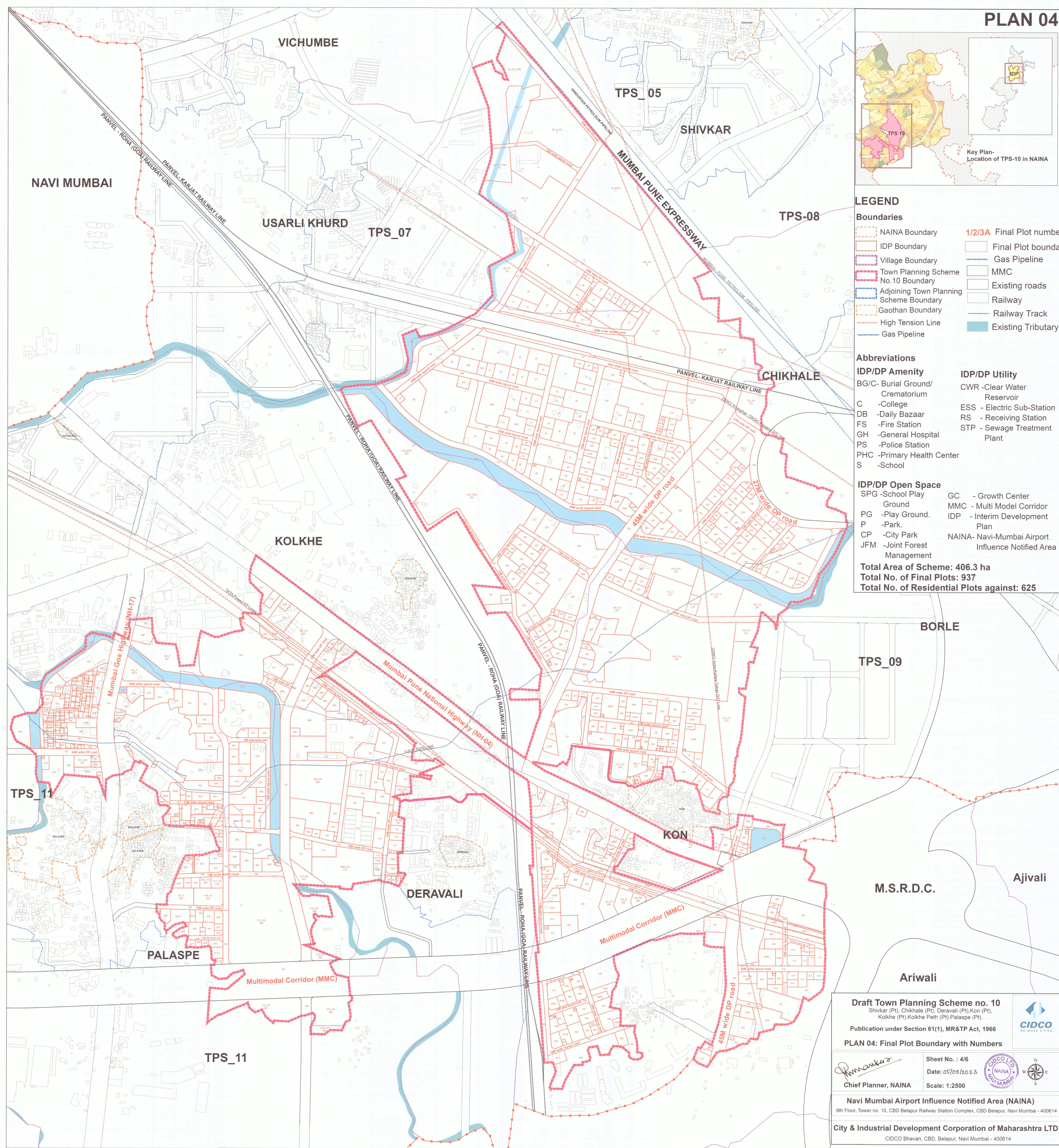
Abbreviations

IDP/DP Amenity	IDP/DP Utility
BG/C - Burial Ground/ Crematorium	CWR - Clear Water Reservoir
C - College	ESS - Electric Sub-Station
DB - Daily Bazaar	RS - Receiving Station
FS - Fire Station	STP - Sewage Treatment Plant
GH - General Hospital	
PS - Police Station	
PHC - Primary Health Center	
S - School	

IDP/DP Open Space

SPG - School Play Ground	GC - Growth Center
PG - Play Ground	MMC - Multi Model Corridor
P - Park	IDP - Interim Development Plan
CP - City Park	NAINA - Navi-Mumbai Airport Influence Notified Area
JFM - Joint Forest Management	

Total Area of Scheme: 406.3 ha
Total No. of Final Plots: 937
Total No. of Residential Plots against: 625



Draft Town Planning Scheme no. 10
 Shivkar (Pt), Chikhale (Pt), Deravali (Pt), Kon (Pt), Kolkhe (Pt), Kolkhe Peth (Pt), Palaspe (Pt).

Publication under Section 61(1), MR&TP Act, 1966

PLAN 04: Final Plot Boundary with Numbers

Sheet No. : 4/6
 Date: 05/09/2023
 Scale: 1:2500

Chief Planner, NAINA

Navi Mumbai Airport Influence Notified Area (NAINA)
 8th Floor, Tower no. 10, CBD Belapur Railway Station Complex, CBD Belapur, Navi Mumbai - 400614

City & Industrial Development Corporation of Maharashtra LTD
 CIDCO Bhavan, CBD, Belapur, Navi Mumbai - 400614