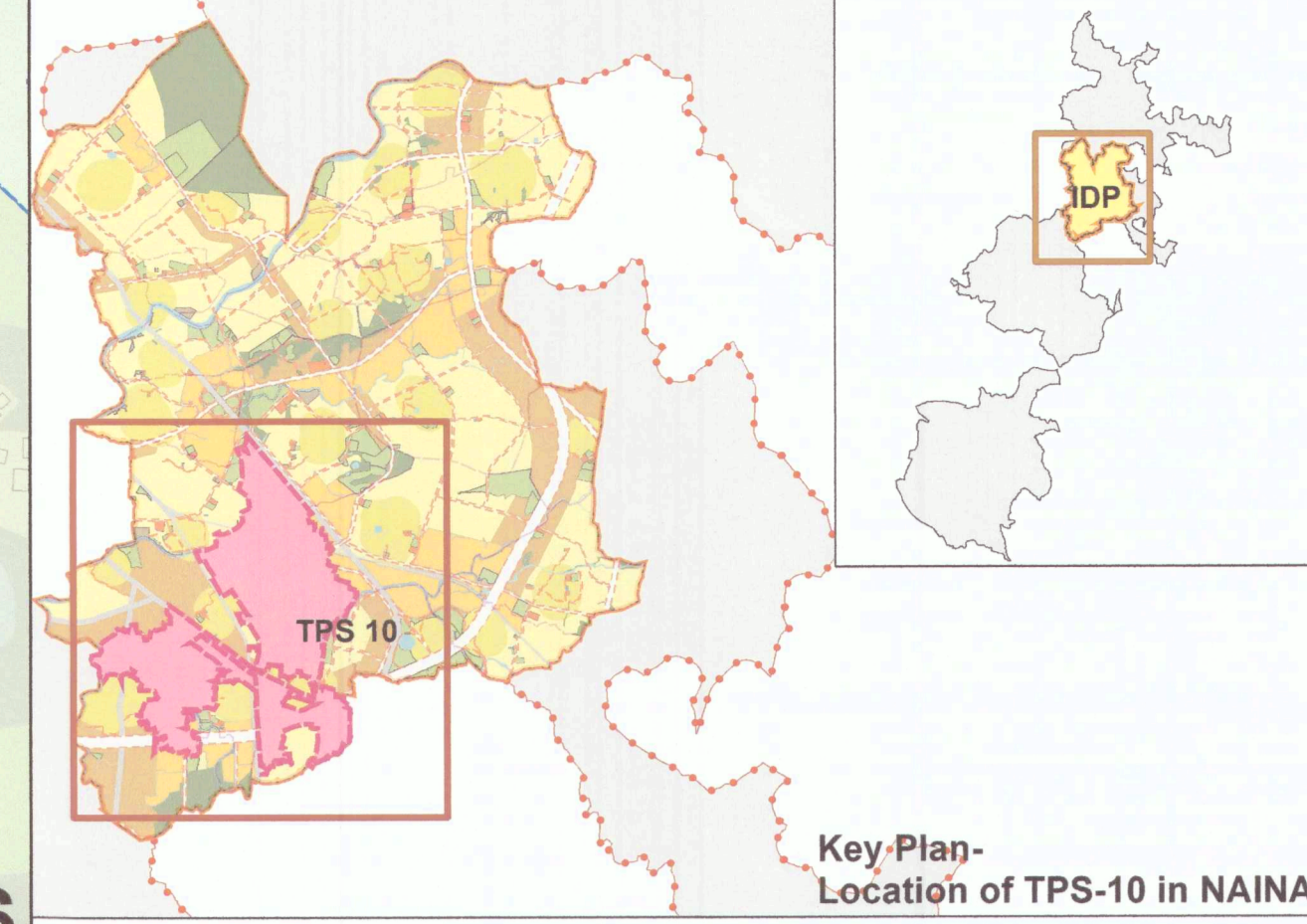


Land use	Area (in Ha)	% on net scheme area	Total percentage
Final Plots	140.73	43%	
Growth Center	32.12	10%	
DP roads	25.97	8%	17%
Layout roads	29.95	9%	
DP amenities	31.77	10%	12%
Layout amenities	7.17	2%	
DP open space	36.12	11%	16%
Layout open space	15.76	5%	
EWS	4.99	2%	
Sale Plots	5.53	2%	
<b>Total net scheme area</b>	<b>330.11</b>	<b>100%</b>	
MMC	22.14		
Forest	14.1		
Water Channel	15.46		
Railway	7.26		
Existing roads	17.18		
<b>Gross Scheme area</b>	<b>406.25</b>		



**LEGEND**

<b>Boundaries</b>	<b>Transportation</b>
--- NAINA Boundary	█ Existing Road
--- IDP Boundary	█ MMC
--- Village Boundary	█ Railway
--- Town Planning Scheme No.10 Boundary	--- Railway Track
--- Adjoining Town Planning Scheme Boundary	--- Road Outside Scheme
--- Gaathan Boundary	
--- High Tension Line	
--- Gas Pipeline	

**Landuse**

█ Final Plot	█ Forest
█ EWS	█ IDP Open Space
█ Growth Center	█ Layout Open Space
█ Existing Amenity	█ IDP Utility
█ IDP/DP Amenity	█ TATA Power Line
█ Layout Amenity	█ DP Road
█ Sale Plot	█ Layout Road
█ Water Body	

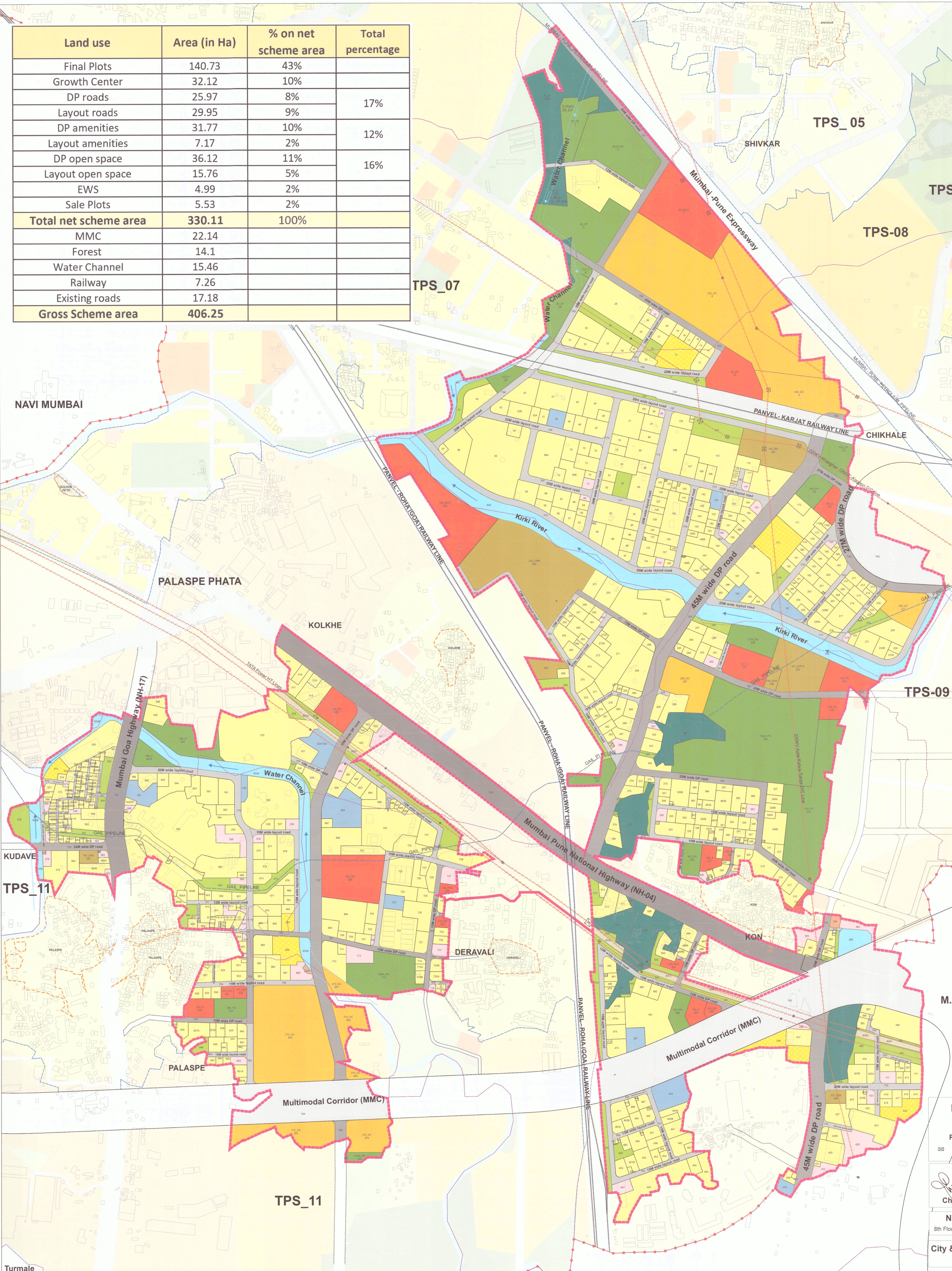
**Abbreviations**

<b>IDP/DP Amenity</b>	<b>IDP/DP Utility</b>
BG/C - Burial Ground/ Crematorium	CWR - Clear Water Reservoir
C - College	ESS - Electric Sub-Station
DB - Daily Bazaar	RS - Receiving Station
FS - Fire Station	STP - Sewage Treatment Plant
GH - General Hospital	
PS - Police Station	
PHC - Primary Health Center	
S - School	

**IDP/DP Open Space**

SPG - School Play Ground	GC - Growth Center
PG - Play Ground	MMC - Multi Model Corridor
P - Park	IDP - Interim Development Plan
CP - City Park	NAINA - Navi-Mumbai Airport Influence Notified Area
JFM - Joint Forest Management	

**Total Area of Scheme: 406.3 ha**  
**Total No. of Final Plots: 937**  
**Total No. of Residential Plots: 625**



**Draft Town Planning Scheme no. 10**  
 Shivkar (Pt), Chikhale (Pt), Deravali (Pt), Kon (Pt), Kolkhe (Pt), Kolkhe Peth (Pt), Palaspe (Pt).

Publication under Section 61(1), MR&TP Act, 1966

**PLAN 06: Landuse Plan**

Sheet No. : 6/6  
 Date: 05/03/2023  
 Scale: 1:2500

Chief Planner, NAINA

**Navi Mumbai Airport Influence Notified Area (NAINA)**  
 8th Floor, Tower no. 10, CBD Belapur Railway Station Complex, CBD Belapur, Navi Mumbai - 400614

**City & Industrial Development Corporation of Maharashtra LTD**  
 CIDCO Bhavan, CBD, Belapur, Navi Mumbai - 400614